

Version 4.4.13 - 16-July-2010

- Full German Translation for the Preferences Window

Version 4.4.12 - 6-July-2010

- For dx cluster command macros you can use now 4 or 6 digit locators. (%LastDXLocator4 or %LastDXLocator6)

Version 4.4.11 - 24-June-2010

- qrz.com log data subscription support added
- Italian translation added - Tnx to Maurizio, IOWM

qrz.com

You will need the subscription to get all data. (<http://www.qrz.com/i/subscriptions.html>) Enter your qrz.com login data into the RUMlog preferences under the QRZ/Map tap.

The new xml interface allows to read more data and the map is back again. Further you can click now on a dataset to take it over into the logging fields:

- Name
- ITU-Zone
- CW-Zone
- County
- State
- IOTA
- QSL Manager
- Locator
- e-mail - opens Mail
- URL - opens in your web browser

There is no auto transfer! When you delete your login data, you will get back the known table view, but no map.

Version 4.4.10 - 12-June-2010

- qrz.com call sign look up works again - qrz.com does not provide the ww-locator (grid square) information any longer in the free service. That's why the stations can not be shown in GoogleMaps or GoogleEarth automatically. To see the map, you have to enter the locator manually.
- The downloaded eQSL user database is being updated correctly now

Version 4.4.9 - 31-May-2010

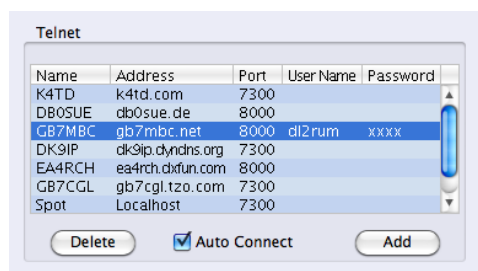
- Data transfer rate to Fldigi reduced in some cases to prevent overloading Fldigi

Version 4.4.8 - 30-May-2010

- Net Control Window: It's possible now to delete entries (call signs) from the database, use the 'Delete' button
- More sun picture options, see the Window menu
- DX-Cluster login with username and password
- French translation - tnx Daniel, F6FLU
- eQSL User Database (AG-Members) added
- 6m Bandplan deactivated for DX spots, the mode computation on 6m was never working reliable
- Limited Fldigi support
- Failure removed, when opening older RUMlog log files
- Failure removed, when using RTTY with K3 for TX and cocoaModem for RX

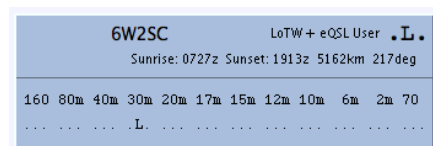
DC Cluster Log In

Log into your dx-cluster now, using a username and a password. Under the DX-Cluster tab in the Preferences you can enter your data. When no username is provided, your active call sign will be used for log in. Please note, your password is seen and saved as plain text!



eQSL AG members

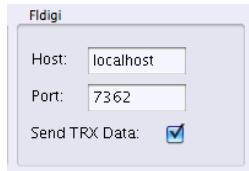
Authenticity Guaranteed eQSL users (AG members) are identified now in the Station Info Box. To update the database use the Menu->File->Reload eQSL user Database.



Fldigi Support

RUMlog can now exchange data with Fldigi. (<http://www.w1hkj.com/Fldigi.html>) There is a small Fldigi section in the Preferences under the Digi tab. The port 7362 is the standard control port for Fldigi and needs normally no changes. For 'Host' use the address (or IP number) for the computer where Fldigi runs, in most cases on the same computer. (localhost or 127.0.0.1)

When the box 'Send TRX DATA' is checked, RUMlog sends TRX mode and frequency data to Fldigi. In RUMlog you can poll the currently used call sign from Fldigi using Menu->Digi->Fldigi - Call Check



Version 4.4.7 - 16-May-2010

- Direkt RTTY (RX and TX) option with K3 added. In the K3 you have to use MCU 3.94 or better, this is currently a Beta version!
- Bug removed: Lists can be deleted now in the Net Control Window - Tnx to Keith, WA0TJT

Version 4.4.6 - 16-April-2010

- Multiple minor bugs fixed
- Telnet dx cluster does not require an internet connection now, this allows to connect to a local cluster (skimmer) when an internet access is not available

Version 4.4.5 - Not public

Version 4.4.4 - 31-March-2010

- AppleScript Commands for PTT switching provided
- PTT AppleScripts added for cocoaModem

Version 4.4.3 - 29-March-2010

- HTML based windows rendering failures removed - long history
- All windows should show the Menu bar now
- K3 power indication corrected

Version 4.4.2 - 26-March-2010

- Some rendering failures removed
- New: FT-950 confirmed functionally, use the FT-2000 setting

Version 4.4.1 - 25-March-2010

- RUMrouter doesn't start now when not required

Version 4.4 - 25-March-2010

- Digital Window added, work RTTY and PSK direct in RUMlog - Menu-->Digi
- K3 Control Window added - Menu-->Transceiver-->K3 Info
- Multiple dx-cluster connections are possible, connect now to your local skimmer - Menu-->Window-->New Telnet Cluster
- LoTW users are indicated in the Station Info box
- User downloadable LoTW User database - Menu-->File-->Load LoTW User Database
- Direct eQSL upload, upload your log with one mouse click Menu-->QSL-->eQSL Direct Upload
- Disconnect Radio command added, useful if you want to connect your radio temporarily to another application - Menu-->Transceiver-->Disconnect
- Greek and Spanish localisations (Partly) - tnx Manos, SV1DAY and Jonathan, EA1HET

Version 4.3.4 - 08-February-2010

- Critical bug in TRX control removed, while editing QSOs the TRX was able to overwrite mode and frequency data. Tnx Rick, K6LE

Version 4.3.3 - 04-February-2010

- Automatic LoTW download works again, a SSL 3 connection is used now
- Minor bug fixes

Version 4.3 - 08-January-2010

- Ten-Tec Orion support added
- CW Output via WinKeyer, K3 or microKeyer II
- Advanced Net Control Window
- LoTW users are indicated in dx spots (a dot after the call sign)
- Bug fixes

Version 4.2.4 - 29-October-2009

- The "Spot last QSO" dx-cluster function should work now properly.

Version 4.2.3 - 27-October-2009

- The ADIF export from the QSL Print Window uses now Windows end of line endings (line feed + carriage return) This is do to work around an import bug in global QSL

Version 4.2.2 - 26-October-2009

- The ADIF export from the QSL Print Window is correct formatted now and the file name has the .adi extension now
- The field QSL in the logging mask will **not** change the value to "W" after logging a QSO

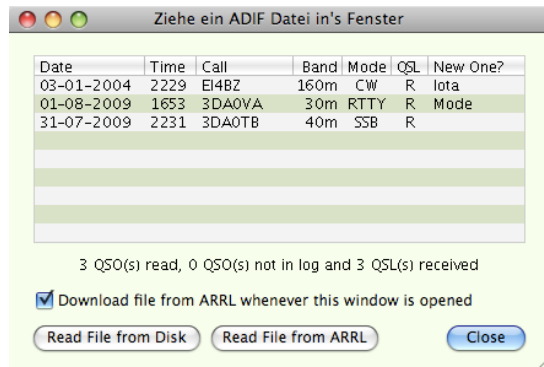
Version 4.2 - 15-October-2009

- Native Elecraft K3 support
- Yaesu FT-2000 and FT-450 Support functional now
- RUMlog remembers the last open windows and reopen these at next program start (most useful windows)
- User editable colour schemes
- Net Control Window added, useful for net controllers only
- New Talk Window, pops up when you get a private message via the dx-cluster (talk command) - telnet cluster only
- Auto Google Earth look up works now as expected
- Scrolling bug in the terminal fixed
- User's manual updated to version 4.2

Version 4.1 - 23-September-2009

When you change a main prefix in the dxcc table using the EditDXCC.app it is no longer required to rework your logs, this will be done automatically now. Make sure you have opened all your logs once with version 4.1 to make some changes on the database structure. After that you can just change the main prefix in EditDXCC.app without any further action. Just reload the log into RUMlog.

The LoTW QSL in Window shows now, if a QSL represents a new one. (not confirmed yet - Paper QSL or LoTW)



EI4BZ confirmed a new island. (IOTA is always band independent)
3DA was not confirmed in a Digi mode before

Version 4.0.4 - 24-August-2009

The internet based Station's Locator lookup works again. This was broken due to changes on the server.

Version 4.0.3 - 16-August-2009

The window based Google Map is working again.

Version 4.0.2 - 8-August-2009

Fixed some viewing problems (not all) in the drawer window

Version 4.0.1 - 7-August-2009

The font size selection in the dx cluster windows is working again, was broken in 4.0
Tnx to Leo, DK5PR

Version 4.0 - 3-August-2009

A lot of new functions are introduced in version 4. The most important are:

- Enable Satellite QSO logging
- Iota logging and tracking
- Locator tracking
- Dual transceiver support
- Own IOTA and qsl manager database
- IOTA alerts

The User's manual is completely rewritten, see the accordingly chapters in the manual for further information.

For history prior version 4.0 see here:

<http://dl2rum.de/rumsoft/rumloghistory.html>